

Sage (UK) Limited Copyright Statement

© Sage (UK) Limited, 2010. All rights reserved

We have written this guide to help you to use the software it relates to. We hope it will be read by and helpful to lots of our customers and because of this it is written as general rather than specific guidance. As we have written the article, we own the content of it; this is known as “copyright” and our ownership is shown as “© Sage (UK) Limited, 2010”. This means you may not copy, modify or distribute the article (either electronically or otherwise) without asking us first.

We always do our best to make sure that the information in the article is correct but due to being general guidance we don’t make any promises about the accuracy of the article’s contents for your particular needs. You should also consider taking professional advice when appropriate, for example to ensure that the results obtained from using the software comply with statutory requirements.

If we refer you to non-Sage information sources (for example, HMRC’s website), this is because we want to be helpful but as we don’t have any control over the contents of those non-Sage sources we can’t accept responsibility for them. If any non-Sage trademarks are used in the article, we acknowledge the ownership of them by the relevant owner.

Sage (UK) Limited
North Park
Newcastle upon Tyne NE13 9AA
Issue date: 31/03/2010
Pbn No:14009

Sage 50 Client Manager

The Client Manager is an accountant tool designed to exchange accounting data with business users working with Sage 50 Accounts.

It is the accountant's side of Accountant Link, developed for both business users and accountants to exchange data.

This guide is aimed at accountants. It provides an overview of Accountant Link followed by detailed instruction on how to use Client Manager.

In this chapter:

Accountant Link.....	2
Importing your client's accounts data from a file.....	5
Recording adjustments	7
Posting an adjustment	7
Exporting your adjustments and narratives to file.....	10

Accountant Link

The majority of Sage 50 Accounts users are small to medium-sized companies, who use the software to manage their day-to-day accounts. Most of these users, however, retain the services of an external accountant to assist at times such as the end of a financial year, or to help when they need to produce legal documents such as the VAT Return.

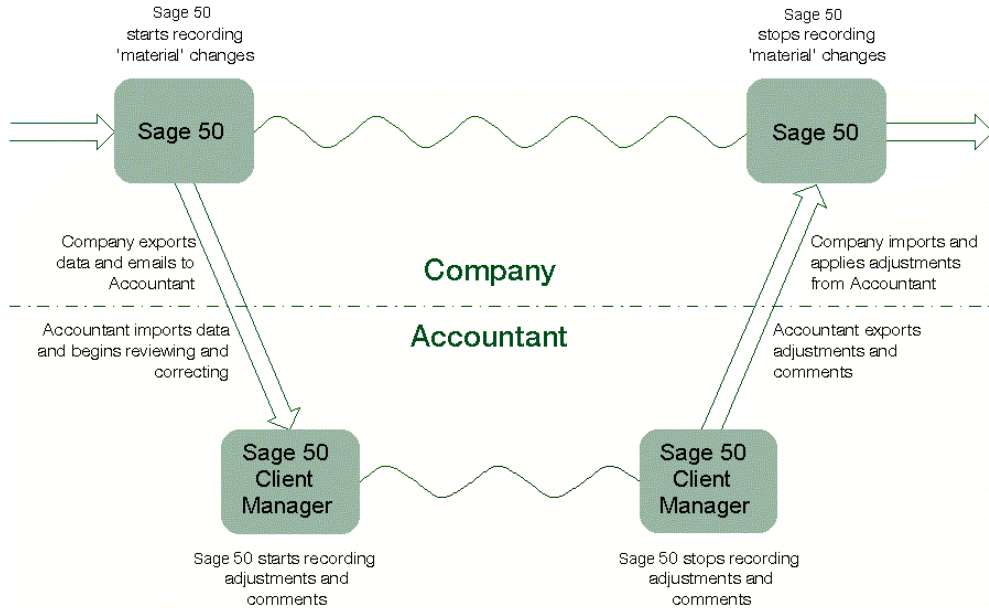
Sage 50 Accounts and Sage 50 Client Manager incorporate the Accountant Link feature, which permits companies and accountants to exchange data more quickly, securely and cost-effectively.

This provides the accountant with the opportunity to make the necessary amendments to the data, while their client continues to process accounts in Sage 50 Accounts.

The accountant can then send any adjustments back to their client for them to apply to their data. Accountant Link includes a built-in mechanism that logs the changes the user makes to their data while the accountant processes the accounts, keeping both users informed of any significant changes that might affect the reconciliation of the adjustments.

Important Note: For both Bank and VAT Reconciliation, both the accountant and the client must be using the same version of Sage 50 Accounts. For example, both parties must be using Sage 50 Accounts 2008 or both parties must be using Sage 50 Accounts 2009.

Accountant Link takes the form of a wizard, which guides both the company and the accountant through the relevant stages of the process. The diagram below illustrates the different stages of the Accountant Link, and shows that there are two distinct parts to the process; the company side and the accountant side:



To correspond with the two sides of the process, the Accountant Link Wizard exists in two forms:

- The company side, present in the Sage 50 Accounts package, enables the business user to export data, send it to their accountant, record material changes and import the accountant's adjustments.

The wizard contains the functions you need to exchange data with your accountant.

Help

For information about using Accountant Link, type 'accountants link' in the online Help index.

- The accountant side, available in the Client Manager variant of Sage 50 Accounts, allows the accountant to import the user's data, record adjustments, export the adjustments to file and send it back to their client, ready for the user to apply the changes.

If you are an accountant using Sage 50 Client Manager, the wizard guides you through the processes you need to exchange data with your clients. For more information, see *Using Accountant Link with Sage 50 Client Manager* on page 4.

Using Accountant Link with Sage 50 Client Manager

In order to check and finalise a client's data, or to assist with processing, for example at year end, you often need to visit the client's business personally to obtain the data files, or alternatively ask the client to send a backup copy to you.

Working on a backup of your client's data may mean that they have to stop processing in Sage 50 Accounts until you return the amended data to them. This can cause considerable disruption to their business, as the client may be unable to process any accounts data for weeks at a time. In addition, exchanging data using backup is not ideal, as there is the risk of the files becoming lost or damaged.

Sage 50 Accountant Link feature enables you to exchange data with your clients more quickly and securely, and lessens the restrictions on your clients by allowing them to continue processing, while you work on your copy of their data. Accountant Link can reduce the need for personal visits to your clients, saving you time and potentially reducing your costs.

When you need to work on the accounts data, your client uses Accountant Link to export it to a compressed, password-protected file and email it to you. Accountant Link in Sage 50 Client Manager enables you to import this file, and then records the adjustments you make to the data, together with any explanatory text you enter.

As your client continues to process, their copy of Sage 50 Accounts keeps a record of any changes that might affect the reconciliation of your adjustments. At any time, you can ask your client to print a copy of the material changes record and send it to you. When you complete your adjustments, use Accountant Link to export the data to a file and send it back to your client, ready for them to apply your adjustments.

The Accountant Link Wizard consists of three sections. Each section guides you through a specific part of the Accountant Link process. The three sections of the wizard are:

- **Exchange Data With Your Clients**

This is the first section of the Accountant Link Wizard, and it appears when you open the wizard from the menu bar - Modules > Wizards > Accountant Link. This window allows you to choose whether you want to import your client's data from a file, or export your adjustments and comments to send to your client.

- **Import Accounts Data From A File**

Use this section of the Accountant Link Wizard to import the data file that your client sends to you for adjustment. At this stage, Sage 50 Client Manager starts to record the adjustments you make to the data.

- **Export Adjustments and Narratives To A File**

This section of the Accountant Link Wizard appears when you choose to export your adjustments to a file from the Exchange Data With Your Clients window. Use this section to guide you through the process of exporting your adjustments to a secure, password-protected file. At this stage, Sage 50 Client Manager stops recording the adjustments you make to the data.

The Export Adjustments and Narratives To A File section of the wizard also enables you to send your exported adjustments file to your client.

To find out how to use the Export Adjustments and Narratives To A File section of the wizard, see *Exporting your adjustments and narratives to file* on page 10. For more information about adjustments, see *Recording adjustments* on page 7.

Note: Before you begin using Accountant Link, you should set up your Accountant Link defaults. See your Sage 50 Accounts Help system for details about this.

Importing your client's accounts data from a file

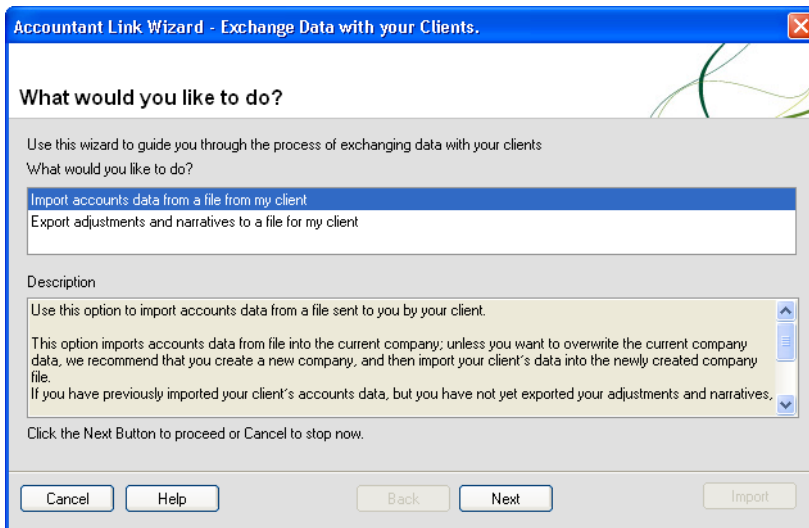
When your clients send data to you for amendment or finalisation, you must import it into Sage 50 Client Manager before you can start to make the necessary adjustments. The Import Accounts Data From A File section of the Accountant Link Wizard guides you through the Import process.

When you import accounts data from a file, Sage 50 Client Manager begins to record adjustments that you make to the data. For more information, see *Recording adjustments* on page 7.

To import your client's accounts data

1. From the menu bar, select Modules > Wizards.
2. From the Wizards menu, select Accountant Link.

The Exchange Data With Your Clients section of the Accountant Link Wizard appears, displaying the What Would You Like To Do? window.



3. Select the Import accounts data from a file from my client option and click Next.

The Import Accounts Data From A File section of the wizard appears, displaying the Select File to Import window.

Accountant Link Wizard - Import Accounts Data from a File

Select File to Import

Import : C:\Documents and Settings\All Users\Application Data\Sage\Accounts\2009\company. Browse...

File Comment :

Sage 50 Accounts Export File,
Company: Smith Utilities
Last Transaction Number: 5050

Password : (min 8 characters)

Click the Import button to import the accounts data to the selected file or Cancel to stop

Cancel Help Back Next Import

4. In the Import box, enter the location and name of the accounts file you want to import. Alternatively, to find the file you require, click Browse.
5. Enter the password associated with the file and click Import to proceed.
 - If you are using a single company installation of Sage 50 Client Manager, the wizard displays the following message:

This is a single company version of Sage 50 Accounts. Importing a dataset will overwrite the existing company dataset. Do you still wish to proceed to overwrite the company dataset?

To confirm that you want to proceed with the import, click OK.

Alternatively, to cancel the import, for example if you want to return to the Sage 50 Client Manager desktop and back up the current data, click Cancel, then to exit to the desktop, click Cancel on the wizard.

- If you have previously imported this company's data, but have not yet exported your adjustments and narratives to file to send to your client, Sage 50 Client Manager displays a confirmation message advising you that if you import the data again, you will lose any adjustments you have made so far.

If you are sure that you want to import the data again, click Yes to proceed. Sage 50 Client Manager clears the adjustments record and continues with the import.

Alternatively, click No to cancel. Sage 50 Client Manager cancels the import process and returns you to the wizard. Click Cancel to exit the wizard and return to the desktop.

When the import is complete, the Accountant Link Wizard closes and the Sage 50 Client Manager desktop appears.

You are now ready to start recording adjustments on the imported data. Refer to the following section for more information.

Recording adjustments

After you import your client's data, Accountant Link allows you to make adjustments to the accounts. You can also enter text that indicates to your client that they may need to apply certain changes manually, or to explain why you have made an alteration.

Adjustments fall into two main groups:

Adjustments, which Sage 50 Accounts applies to your client's data automatically.

Narratives, which are changes that the user must apply manually.

For example, if you post or reverse a journal entry, Sage 50 Client Manager records the change as an adjustment that your client can apply to their data automatically. If you process a financial year end, this appears as a narrative that your client must replicate manually.

When you successfully import a file containing your client's accounts data, Sage 50 Client Manager generates a new file to record your adjustments and narratives. During the time between importing the file and exporting your adjustments and narratives, Sage 50 Client Manager uses this file to record the changes you make to the data.

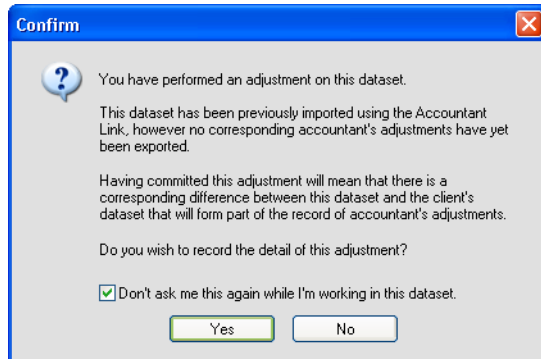
To show that it is recording adjustments, Sage 50 Accounts displays Recording in the status bar:

Sage 50 Accounts Client Manager 2009	Recording		16/03/2009		April 2009
--------------------------------------	-----------	--	------------	--	------------

Before you export your amendments, you can view and print the adjustments and narratives record at any time. See *To view the comments and adjustments record* on page 10.

Posting an adjustment

When you try to save an adjustment, Sage 50 Client Manager displays a confirmation message:



If you want to commit all adjustments to this set of data and do not want the prompt to appear each time, select the Don't ask me this again while I'm working in this dataset check box, then to save the adjustment, click Yes. Every time you make an adjustment to this set of data, Sage 50 Client Manager records the change automatically without prompting you.

Alternatively, to cancel without recording the adjustment, click No.

The Comments and Adjustments record

Sage 50 Client Manager stores all your adjustments and narratives in a file, allowing you to view a record of the changes at any time.

The Comments tab allows you to enter explanatory comments about the adjustments you make to the data, which you or your client can print for reference.

The Adjustments tab displays a summary of the adjustments and narratives you make in your client's data following the import. If you want to add comments to individual adjustments, use the Adjustment Details section of the Adjustments tab:

Accountant Link - Comments and Adjustments

Comments Adjustments

The following list of adjustments will be sent to your client when you export your comments and adjustments

No.	Summary	Username	Date	Type
1	Program Date Change	MANAGER	09/12/2008	Narrative
2	Create Customer: JOHNS01	MANAGER	09/12/2008	Narrative
3	Customer Batch Invoice	MANAGER	09/12/2008	Auto-Transaction
4	Customer Batch Invoice	MANAGER	09/12/2008	Auto-Transaction

Adjustment Details

Program Date changed to: 09/12/2008

Accountant Comment

Cancel Print List Close

Again, you can print this list if you require.

To view the comments and adjustments record

1. From the menu bar, click View and select Comments and Adjustments.
The Comments and Adjustments window appears, open at the Comments tab.
2. To add comments to the Comments and Adjustments record, click into the text box on the Comments tab and type the information you require.
3. To view a summary of your adjustments and narratives, click the Adjustments tab.
4. To print the Comments or Adjustments information, click Print List at the bottom of the relevant tab.
5. To exit from the Comments and Adjustments window, click Close.
The Sage 50 Accounts desktop appears.

Exporting your adjustments and narratives to file

When you have completed your adjustments and you are satisfied with the accounts, you need to export the amended data to file so that you can send it back to your client.

Exporting data using Accountant Link produces a compressed file to which you can apply your own password for added security, and send to your client by e-mail. This means that your client can receive your adjustments electronically, and import and apply the changes at a time that is convenient to their business.

The Accountant Link Wizard connects the export and send procedures together, providing a logical way of performing the two related tasks.

When you export your adjustments and narratives to file, Sage 50 Client Manager stops recording adjustments and reverts to standard behaviour.

To export your adjustments and narratives to file and send to your client

1. From the menu bar, select Modules > Wizards.
2. From the Wizards menu, select Accountant Link.
The Exchange Data With Your Clients section of the Accountant Link Wizard appears, displaying the What Would You Like To Do? screen.
3. Select the Export adjustments and narratives to a file for my client option, then to continue, click Next.
The Export Adjustments and Narratives To A File section of the wizard appears, displaying the Create Export File window.

Accountant Link Wizard - Export Adjustments and Narratives to a File

Create Export File

Save as : C:\DOCUMENTS AND SETTINGS\ALL USERS\APPLICATION DATA\SAGE\ACCOUN Browse...

Password : Passwords must have a minimum of eight characters.

Confirm : You should also note passwords separately for later reference.

Save file with this comment :

Sage 50 Accounts Adjustments File,
Company: Smith Utilities
Last Transaction Number: 4

Click the Export button to export the adjustments and narratives file or Cancel to stop now.

Cancel Help Back Next Export

4. Enter the file name, password and comment you want to use for the export file.

Note: Your password must contain at least eight characters.

5. To proceed, click Export.

The Exporting to File window appears, displaying the progress of the export process. When the process is complete, the Adjustments and Narratives Exported Successfully window appears.

Accountant Link Wizard - Export Adjustments and Narratives to a File

Create Export File

The adjustments and narratives were exported to file successfully.

If you would like to send the exported adjustments and narratives to a client, you can continue to use this wizard to help you to do this.

Would you like to send exported adjustments and narratives to a client as an email attachment now?

Click the Next button to proceed with this or Finish to stop now.

Cancel Help Back Next Finish

From this window, you can continue to the next stage of the Accountant Link process and send your exported adjustments file to your client by email.

6. To email your exported adjustments file to your client now, click Next.

If you have more than one profile set up in Microsoft® Outlook, the Choose Profile window appears. Select the Microsoft® Outlook profile you want to use and click OK.

A Microsoft® Outlook email message appears, automatically displaying the company's email address as it appears in Company Preferences. Sage 50 Accounts inserts the export file into the message as an attachment, and sets the subject of the message to Sage Adjustments and Narratives Export.

7. Make any amendments you require to the e-mail message and click Send.

The Accountant Link Wizard closes and the Sage 50 Accounts desktop appears.

You have successfully exported your adjustments and narratives and sent the exported file to your client as an email attachment.

