

Sage (UK) Limited Copyright Statement

© Sage (UK) Limited, 2010. All rights reserved

We have written this guide to help you to use the software it relates to. We hope it will be read by and helpful to lots of our customers and because of this it is written as general rather than specific guidance. As we have written the article, we own the content of it; this is known as “copyright” and our ownership is shown as “© Sage (UK) Limited, 2010”. This means you may not copy, modify or distribute the article (either electronically or otherwise) without asking us first.

We always do our best to make sure that the information in the article is correct but due to being general guidance we don't make any promises about the accuracy of the article's contents for your particular needs. You should also consider taking professional advice when appropriate, for example to ensure that the results obtained from using the software comply with statutory requirements.

If we refer you to non-Sage information sources (for example, HMRC's website), this is because we want to be helpful but as we don't have any control over the contents of those non-Sage sources we can't accept responsibility for them. If any non-Sage trademarks are used in the article, we acknowledge the ownership of them by the relevant owner.

Sage (UK) Limited
North Park
Newcastle upon Tyne NE13 9AA
Issue date: 31/03/2010
Pbn No: 14060

Citrix® Configuration Utility for Sage Accounts

Sage recognise that although several large Accounting groups use Sage Accounts on their Citrix® Servers, considerable reconfiguring of key software files is necessary to achieve satisfactory integration.

In this release of Sage Accounts efforts have been made to improve the ease with which Citrix® users can set the location of the Company file, the sage.ini file, the location of application data and reports

To achieve this flexible Citrix® supporting feature, a dedicated configuration utility - **config** - has been provided for Citrix® Server administrators to flexibly define these critical file locations.

Contents	
Caution.....	2
Introduction	2
Configuration utility overview.....	2
Administrative preparation before using the config utility.....	3
Set critical file locations for the Citrix® environment.....	3
Citrix® utility - paths and registry information.....	6
Citrix® utility - configuration file format.....	7
Examples of config.xml files	10

Caution

The utility described in this topic is a very powerful configuration tool, and should only be used by Citrix® Server - competent personnel and/or Server Administrators.

Inappropriate usage of this utility by untrained personnel could cause serious software malfunction or even loss of data.

Introduction

Sage recognise that although several large Accounting groups use Sage Accounts on their Citrix® Servers, considerable reconfiguring of key software files is necessary to achieve satisfactory integration. In this release of Sage Accounts, efforts have been made to improve the ease with which Citrix® users can:

- Set the location of the Company file
- Set the location of the sage.ini file
- Set the location of the application data
- Set the location of the reports

To achieve this flexible Citrix® supporting feature, a dedicated configuration utility - **config** - has been provided for Citrix® Server administrators to flexibly define these critical file locations.

Configuration utility overview

The configuration utility can be used to configure the registry settings used for Citrix® virtualisation in Sage Accounts. The utility consists initially of two files - config.dtd and config.exe. These are located on your installation CD in the folder \Support\Configure.

As a first step, copy the Configure folder and contents from the installation CD to the PC, where Sage Accounts is to be installed. Run the config.exe from this new location, not from the CD.

When you first run the config.exe it opens in visual, interactive (GUI) mode, whereby you can define or change critical file / folder paths and locations.

When you have defined and saved your critical file locations, a third file - config.xml needs to be created detailing these settings - see *Citrix® utility - configuration file format* on page 7 and *Examples of config.xml files* on page 10. This config.xml file needs to be saved in the same location as config.exe, that is, in the Configure folder. You can copy this xml file, as required.

On subsequent occasions, when you run config.exe, the config.dtd file validates the existence and schema of the config.xml file. If the config.xml file is detected and validated,

config.exe opens in a Sentry or Unattended mode, whereby there is no interactivity with the user. In Unattended mode, the utility logs any progress or action events to a config.txt file.

Administrative preparation before using the config utility

It is important to realise that the config utility only sets critical file locations.

It **does not copy** existing files.

Administrators must prepare to identify and copy existing data - files to the intended locations.

Company data

As an example, if an Administrator decides to change the location of the Company data folder, the config utility creates a new, blank Company file in the new location. Any new companies created subsequently are added to the company file in the new location. However, existing companies that the user wishes to view need to be added using File>Open Company>Add Company.

Sage.ini

Similarly, if the Administrator changes the location of the sage.ini file but wishes to still use an existing sage.ini file, then again, this needs to be copied manually.

Reports

Once again, setting the Reports folder in a new location does not copy existing reports. The Reports folder containing the existing reports must be copied over manually from an existing location.

Set critical file locations for the Citrix® environment

The utility consists initially of two files - config.dtd and config.exe. These are located on your software disk or in your download location in the folder Support\Configure.

Initial setup

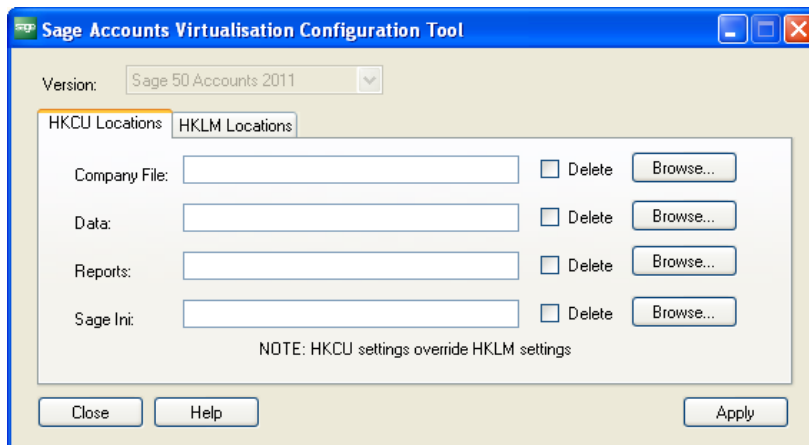
1. On the PC where Sage Accounts is to be installed, copy the Configure folder with the two config files from the CD to your desktop.
2. Run the config.exe from this location, not from the disk.

When you first run config.exe it opens in visual, interactive (GUI) mode, whereby you can define or change critical file / folder paths and locations.

Main setup

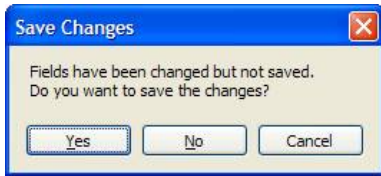
1. When first setting up your registry settings for your critical file location paths, run the config.exe file.

Use this utility to define the location of your critical files.



2. If multiple installations of Sage Accounts are detected, the Version drop-down list box is active. Select the version of Sage Accounts to configure.
If only a single version of Sage Accounts is installed, the Version drop-down list box is inactive.
3. Select the HKEY_CURRENT_USER tab (HKCU Locations) or HKEY_LOCAL_MACHINE tab (HKLM Locations), as required. If errors are encountered by the utility, while trying to open the HKCU or HKLM Windows registry hives, then the corresponding tab is inactive.
Setting up with the HKCU tab sets folder locations for current user only, whilst setting up with the HKLM tab defines settings for any user logging into the machine.
Note: The HKCU Locations tab settings override the HKLM Locations tab settings. However, if HKCU settings are left blank, HKLM settings are implemented.
4. To set your file locations using the HKEY_CURRENT_USER tab (HKCU Locations) or HKEY_LOCAL_MACHINE tab (HKLM Locations), as required, use the Browse button.
When you have set a location, the Delete check box becomes inactive.
5. If a particular Location entry is blank, the Delete check box is cleared but active. To delete the current registry entry when the changes are applied, select the check box.
6. When you have completed setting your critical file locations, click Apply.

The utility then prompts you to confirm your changes.



7. To save your file location paths, click Yes.

If the Delete check box was selected against a particular location, the registry is updated with your Location changes, and / or existing values are deleted.

8. A third file - config.xml now needs to be created detailing these settings - see *Citrix® utility - configuration file format* on page 7 and *Examples of config.xml files* on page 10. This config.xml file needs to be saved in the same location as config.exe, that is, in the Configure folder. You can copy this xml file, as required.

On subsequent occasions, when you run config.exe, the config.dtd file validates the existence and schema of the config.xml file. If the config.xml file is detected and validated, the config.exe opens in a Sentry or Unattended mode, whereby there is no interactivity with the user. In Unattended mode, the utility logs any progress or action events to a config.txt file. An example sample log is shown below:

```
21/01/2010 08:39:13: -----
21/01/2010 08:39:13: Start
21/01/2010 08:39:13: -----
21/01/2010 08:39:13: Loading config.xml
21/01/2010 08:39:13: Validating XML document schema
21/01/2010 08:39:13: XML document schema is valid
21/01/2010 08:39:13: Saving HKLM\Software\Sage\Accounts 2011: CompanyFilePath =
hklmcompany
21/01/2010 08:39:13: Saving HKLM\Software\Sage\Accounts 2011: SageIniPath =
hklmini
21/01/2010 08:39:13: Saving HKLM\Software\Sage\Accounts 2011: DataPath = hklmdata
21/01/2010 08:39:13: Saving HKLM\Software\Sage\Accounts 2011: ReportsPath =
21/01/2010 08:39:13: Saving HKCU\Software\Sage\Accounts 2011: DataPath = hkcu data
21/01/2010 08:39:13: Saving HKCU\Software\Sage\Accounts 2011: ReportsPath = hkcu
```

Citrix® utility - paths and registry information

The default paths for Company file, Sage ini file, Data and Reports path can each be specified by setting the appropriate registry values in the registry hives:

- HKEY_LOCAL_MACHINE (HKLM)
- HKEY_CURRENT_USER (HKCU)

The registry settings are stored under Software\Sage\Accounts CCYY, where CCYY is the software version. The following table provides a description of the paths, the registry name that they are stored under, and their default location in Sage Accounts.

Description	Registry Name	Default Location
Company file path Location of COMPANY file	CompanyFilePath	C:\Documents and Settings\All Users\Application Data\Sage\Accounts\CCYY
Sage INI path Location of SAGE.INI file	SageIniPath	C:\Documents and Settings\All Users\Application Data\Sage\Accounts
Data Path Location of Company CCC, Practice, IREPractice and Demodata folders	DataPath	C:\Documents and Settings\All Users\Application Data\Sage\Accounts\CCYY
Reports Path Location of parent folder containing a Reports sub-folder, within which there are *.report files	ReportsPath	C:\Documents and Settings\All Users\Application Data\Sage\Accounts\CCYY\Company. CCC

KEY

CCYY	Version	2011 for example
CCC	Company number	000

The registry entries are strings or expandable string values, where values contain environment variables.

Paths may contain environment variables. Environment variable names are case sensitive and must be enclosed by a single % character on each side of the variable name. If environment variables are used, the registry entry type must be set to Expandable String Value. The config utility handles the setting of this type automatically.

Sage Accounts prefers settings in HKCU over HKLM. If settings for any of the paths are absent or evaluate into an empty string, Sage Accounts uses the normal default setting for a path, as shown in the table above.

It should be noted that an empty path in HKCU can be useful to override any settings already provided in HKLM, thereby forcing Sage Accounts to use the appropriate default value. An empty path value cannot therefore, be regarded the same as a setting, which is not present.

UNC paths are supported.

The following table gives an illustration of what the Sage Accounts application would process - that is, the Result column, given various value combinations for the Company path in both HKLM and HKCU registry hives.

Note: Comments in the following table are enclosed in {} braces. All other values are literals.

HKLM	HKCU	Result
\\server\accounts\company	{setting absent}	\\server\accounts\company
\\server\accounts\company	c:\company	c:\company
\\server\accounts\company	{empty setting present}	{accounts will use default}
{setting absent}	{setting absent}	{accounts will use default}
{empty setting present}	{setting absent}	{accounts will use default}
{setting absent}	{empty setting present}	{accounts will use default}
{setting absent}	c:\company	c:\company
{setting blank}	c:\company	c:\company
%HOMEDRIVE%\Company	{setting absent}	c:\company

Citrix® utility - configuration file format

Configuration file - config.xml

If you want the config.exe utility to run in Unattended mode, the fixed filename config.xml is required.

Element summary

Element Name	Usage	Description
sage50accounts	Mandatory	Contains a version element and one or more config elements.
version	Mandatory - CCYY format	Specifies which version of Sage Accounts, to which the configuration settings apply.
logfile	Optional	Specifies the path and location of the logfile. If blank or absent, the logfile is output to the current directory using the default name config.txt. The optional attribute enable="false" can be used to disable logging.
config	Mandatory	Contains either a hkml or khcu element followed by optional companyfilepath, sageinipath, companydatapath and reportspath elements.
hkml	hkml or khcu	Empty element which indicates that the registry settings belong in the HKEY_LOCAL_MACHINE hive.
khcu	hkml or khcu	Empty element which indicates that the registry settings belong in the HKEY_LOCAL_CURRENT_USER hive.
companyfilepath	Optional	Specifies the location of the company file. Leave this element blank and add the delete="true" attribute to delete this registry entry. See <i>Citrix® utility - paths and registry information</i> on page 6.
sageinipath	Optional	Specifies the location of the Sage ini file. Leave this element blank and add the delete="true" attribute to delete this registry entry. See <i>Citrix® utility - paths and registry information</i> on page 6.
companydatapath	Optional	Specifies the location of the company data files. Leave this element blank and add the delete="true" attribute to delete this registry entry. See <i>Citrix® utility - paths and registry information</i> on page 6.
reportspath	Optional	Specifies the location of the reports files. Leave this element blank and add the delete="true" attribute to delete this registry entry. See <i>Citrix® utility - paths and registry information</i> on page 6.

DTD file - config.dtd

The DTD file is used to validate the schema of the config.xml file and must be stored in the same directory as the config executable.

An example of the config.dtd file is shown below:

```
<!ELEMENT sage50accounts (version, logfile?, config+)>
<!ELEMENT version (#PCDATA)>
<!ATTLIST logfile enable (true|false) "true">
<!ELEMENT logfile (#PCDATA)>
<!ELEMENT config ((hk1m|hkcu),companyfilepath?,
sageinipath?, companydatapath?, reportspath?)>
<!ELEMENT hk1m EMPTY>
<!ELEMENT hkcu EMPTY>
<!ATTLIST companyfilepath delete (true|false) "false">
<!ELEMENT companyfilepath (#PCDATA)>
<!ATTLIST sageinipath delete (true|false) "false">
<!ELEMENT sageinipath (#PCDATA)>
<!ATTLIST companydatapath delete (true|false) "false">
<!ELEMENT companydatapath (#PCDATA)>
<!ATTLIST reportspath delete (true|false) "false">
<!ELEMENT reportspath (#PCDATA)>
```

Examples of config.xml files

config.xml file - example 1

In the following example, the companyfilepath, companydatapath and reportspath are set up in HKLM. The reportspath is then set to blank in HKCU, which overrides the HKLM setting. The sageinipath registry value is deleted from HKCU.

Note: It is possible to specify blank values or delete registry entries in either the config.exe GUI or Unattended modes. For details on the difference between blank values and deletes, please refer to *Citrix® utility - paths and registry information* on page 6.

```
<?xml version="1.0"?>
<!DOCTYPE sage50accounts SYSTEM "config.dtd">
<sage50accounts>
  <version>2011</version>
  <config>
    <hk1m/>
    <companyfilepath>c:\company</companyfilepath>
    <companydatapath>z:\reports</companydatapath>
    <reportspath>c:\reports</reportspath>
  </config>

  <config>
    <hkcu/>
    <reportspath/>
    <sageinipath delete="true"/>
  </config>
</sage50accounts>
```

config.xml file - example 2

In the second example illustrated below, the log file is written to c:\log.txt. The HKCU companyfilepath is set to %HOMEDRIVE%%HOMEPATH%\cf. What the path extend to in Sage Accounts is dependent upon the environment, in which it is executed. In this example, the environment variables %HOMEDRIVE% and %HOMEPATH% are set to C: and \Documents and Settings\lee.waugh respectively, where lee waugh is the current user.

```
<?xml version="1.0"?>
<!DOCTYPE sage50accounts SYSTEM "config.dtd">
<sage50accounts>
  <version>2011</version>
  <logfile>c:\log.txt</logfile>
  <config>
    <hkcu/>
    <companyfilepath>%HOMEDRIVE%%HOMEPATH%\cf</companyfile
path>
  </config>
</sage50accounts>
```

config.xml file - example 3

This example is identical to example 2, other than the logfile setting. In this example, the log file setting has been disabled.

```
<?xml version="1.0"?>
<!DOCTYPE sage50accounts SYSTEM "config.dtd">
<sage50accounts>
  <version>2011</version>
  <logfile enable="false"/>
  <config>
    <hkcu/>
    <companyfilepath>%HOMEDRIVE%%HOMEPATH%\cf</companyfile
path>
  </config>
</sage50accounts>
```